

HDC-2030F

HD-SDI Camera

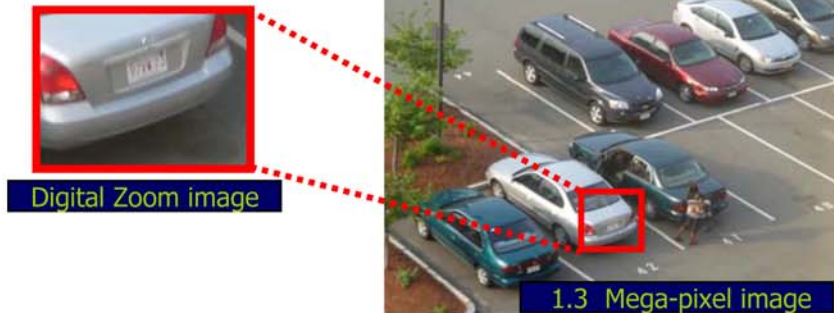


Features

- High Definition Mega Pixels HD-SDI Camera
- 1/3 Progressive scan CMOS Sensor
- Max. 1280(H) x 720(V) 1.3 Mega Pixels
- TDN(ICR), DSS, OSD
- Excellent low light sensitivity (0.05Lux,, B/W)
- 3D-DNR, BLC, Digital Zoom (Max. 20x)
- Motion Detection, Privacy Zone, Mirror Function
- 1.3 Mega-Pixels real time with coaxial cable
- Non Compression digital streaming up to 1.5Gbps
- 1CH audio support
- 1CH CVBS output support
- RS-485 (Pelco-D) Protocol

High quality Mega pixels image

HGP2030F provides high definition image up to 1.3 Mega pixels via HD-SDI interface with conventional coaxial connection. Basically, it supports up to 1280x1024(aspect ratio 4:3) also cropped 720P 16:9 aspect ratio which is HDTV standards.



Progressive scanning & High Performance Low light sensitivity

HGP2030F's progressive scanning provided much clearer monitoring image with flicker-free Noiseless and CNB proprietary DSP technology up to 0.05Lux even CMOS Image sensor.



